

The AGFA logo is displayed in a bold, white, sans-serif font. The background of the advertisement is a dark, industrial setting, likely a printing plant, with a large inkjet printer in operation. A vibrant, colorful landscape image is being printed on a wide sheet of paper that moves through the machine. The scene is lit with dramatic blue and orange light, highlighting the machinery and the printed image. The overall aesthetic is modern and high-tech.

**AGFA**



**Powerful  
by nature.**

Whatever environment you operate in, whatever your markets or applications, whether seeking high productivity, quality, or versatility, we have the right printer for you. Our inkjet beasts are powerful by nature, each with unique strengths built into its design. They will deliver impressive results without compromise and give your business a boost.

# > A beast for every need

m<sup>2</sup>/h

p r i n t e r s p e e d

7000

SpeedSet Orca 1060

Sheetfed water-based inkjet printer → → → → → →

1500

ONSET  
**GRIZZLY**  
X3 HS



flatbed

→ → → → → →



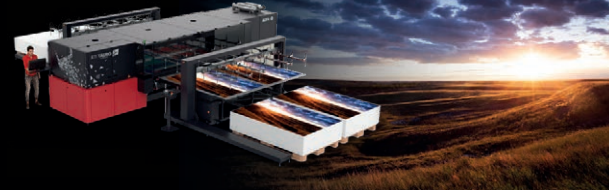
1000

JETI  
**TAURO**  
H3300 UHS



hybrid

→ → → → → →



700

JETI  
**CONDOR**  
RTR5200 S



roll-to-roll

→ → → → →



400

Jeti Tauro H2500

hybrid → → →

JETI  
**BRONCO**  
H3300 S



hybrid

→ →



Avinci CX3200 textile printer

roll-to-roll textile → →

Jeti Mira MG2716/2732

flatbed → →

Oberon RTR3300

roll-to-roll → →

200

ANAPURNA  
**CIERVO**  
H3200



hybrid

→ →



Anapurna H2500/2050/1650

hybrid printer series →

Anapurna RTR3200

roll-to-roll →

100

Anapurna FB2540

flatbed →

# > Why Agfa

## Inkjet experts

We are a leading company in imaging technology and IT solutions with over 150 years of experience. We have been developing and manufacturing state-of-the-art inkjet printing systems for over two decades, empowering print service providers to become both more versatile and efficient.

## Best cost of ownership

Inks, print heads, substrates, and color management software are perfectly tuned to each other to guarantee spot-on print quality, reliable production, low consumable usage and limited maintenance. In sum: we guarantee you the best possible cost of ownership.

## One-stop shop

Opt for peace of mind with a complete solution from a single supplier: printer, software, inks, service and support. We even offer attractive financing options.

## Spot-on inks

- > Large color gamut and high vibrancy
- > Low ink consumption thanks to Thin Ink Layer technology
- > Reliable jetting & batch-to-batch consistency
- > Resistant to wear and tear
- > Highly opaque white
- > Primer option for difficult media
- > Compliant with health & environment standards, including GREENGUARD Gold



## Asanti workflow & color management

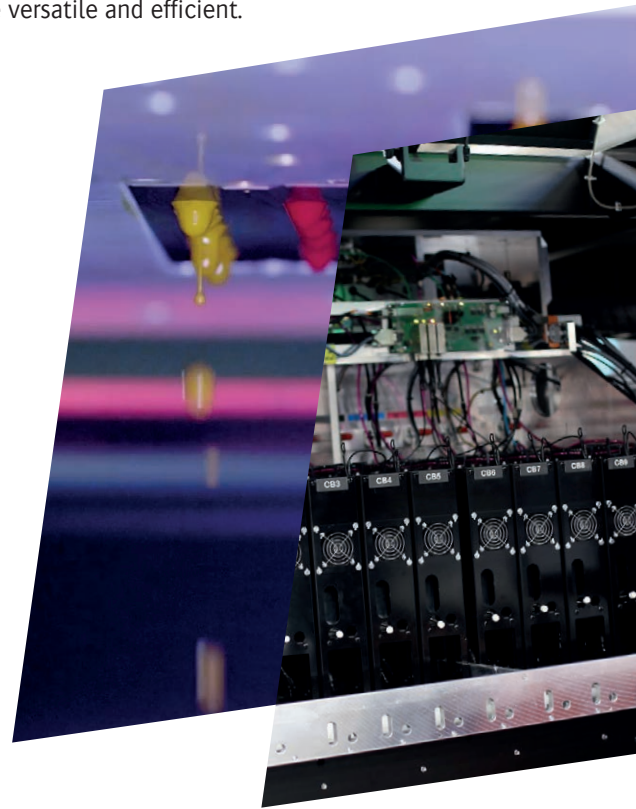
- > Streamlines the printing process from prepress to production
- > Guarantees error-free job handling and consistent color reproduction
- > Parameter-based Calibrated Print Modes enable automatic job creation
- > Production Dashboard offers overview of job status, and ink and media consumption
- > Includes latest Adobe PDF Print Engine

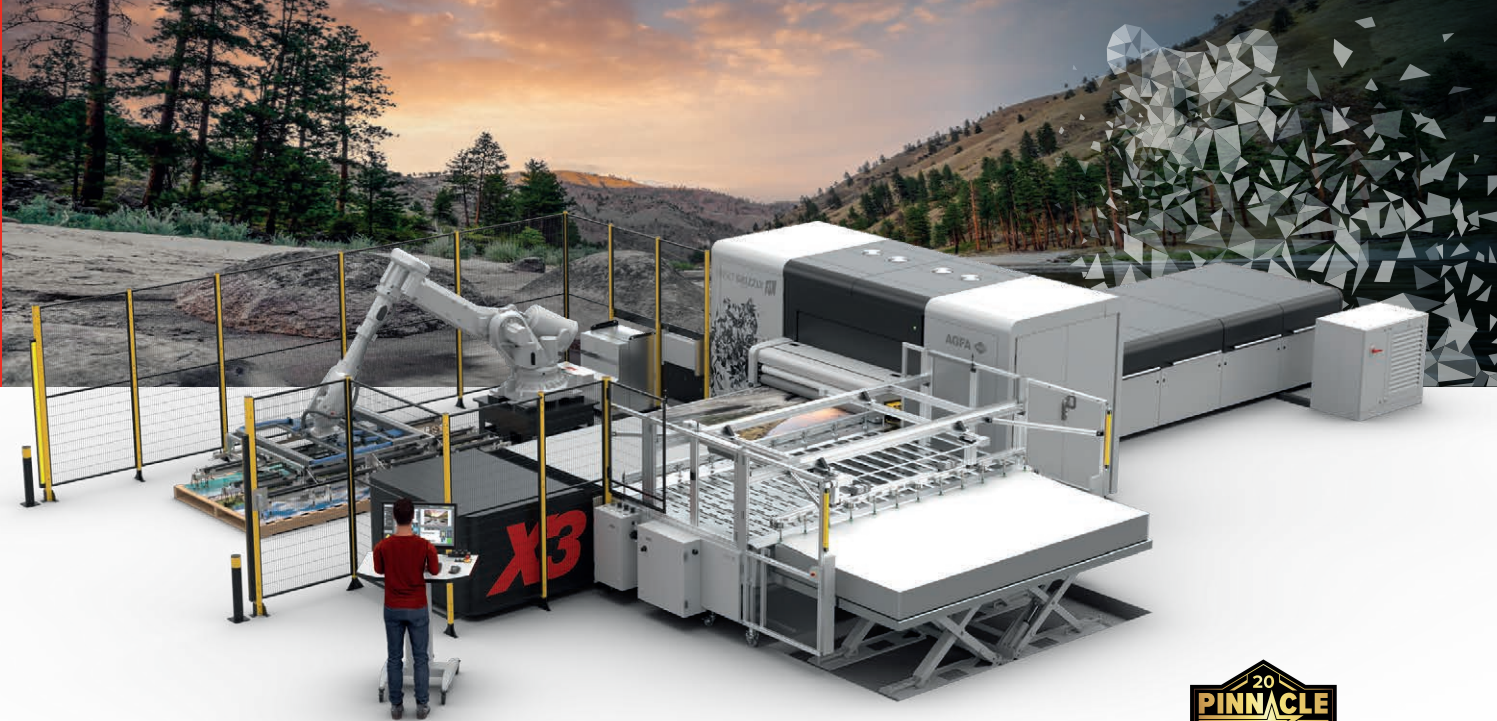
More software options:

- > **Asanti StoreFront**  
cloud-based web-to-print solution
- > **PrintSphere**  
cloud-based file sharing
- > **PrintTune**  
print standardization

## World-class training and support

- > Expert support worldwide minimizes downtime with fast response times and remote troubleshooting capabilities
- > Comprehensive training during setup and production, tailored to your needs
- > Your feedback shapes our partnership





# Onset Grizzly X HS

Flatbed → → → → →

Up to 1450 m<sup>2</sup>/h - 15,000 ft<sup>2</sup>/h (281 boards/h) | Up to 322 x 160 cm - 127 x 63 in

Up to 3 x CMYK – optional light cyan, light magenta & white

Automatable | Upgradable speed & colors



## Key benefits

- > Heavy-duty build for 24/7 printing with impressive productivity and print quality
- > Versatile printer: tackles sign & display, as well as packaging jobs on wide range of materials
- > 30-second job setup thanks to automated robot end effectors and UV lamp shutters, plus advanced vacuum table technology
- > Multiple automation & configuration options – including laytable, autoloader and robots – for different production and material handling requirements
- > High-quality & gloss modes for extra impactful prints
- > A scalable platform that can grow with your business

## Perfect for

Retail POS graphics, corrugated POP displays, corrugated packaging

## Grizzly models

Grizzly X1 HS	Grizzly X2 HS	Grizzly X3 HS
<ul style="list-style-type: none"> <li>&gt; 1 x CMYK</li> <li>&gt; 8-channel shuttle</li> <li>&gt; Maximum throughput: 600 m<sup>2</sup>/h - 6,458 ft<sup>2</sup>/h *</li> <li>&gt; High-quality print modes</li> <li>&gt; Ideal for lower-volume, dedicated flatbed applications</li> <li>&gt; Available options: white, light colors</li> </ul>	<ul style="list-style-type: none"> <li>&gt; 2 x CMYK</li> <li>&gt; 8-channel shuttle, or 14-channel shuttle when light colors or white is requested</li> <li>&gt; Maximum throughput: 835 m<sup>2</sup>/h - 8,988 ft<sup>2</sup>/h *</li> <li>&gt; High-quality print modes</li> <li>&gt; Fastest configuration for 6-color printing with 2x CMYK setup</li> <li>&gt; Available options: white, light colors</li> </ul>	<ul style="list-style-type: none"> <li>&gt; 3 x CMYK, optional white and/or light colors</li> <li>&gt; 14-channel shuttle</li> <li>&gt; Maximum throughput: 1450 m<sup>2</sup>/h - 15,600 ft<sup>2</sup>/h *</li> <li>&gt; High-quality print modes</li> <li>&gt; Available options: white and/or light colors</li> </ul>

\* Based on an approximate 4.4-second material handling time.

Upgrade paths between the different configurations are possible. For more information contact your local sales representative.

### Use less ink and print faster

- > Save up to 30% on ink consumption and print white up to 40% faster when using the high-quality Agfa inks
- > Using the new white print mode, the Onset Grizzly applies white ink 40% faster than when non-Agfa ink is used



# Jeti Tauro H3300 LED

Hybrid → → → → →

Up to 905 m<sup>2</sup>/h - 9,741ft<sup>2</sup>/h | Up to 330 cm - 130 in

CMYK | CMYKck | CCMYKck | CMYKcmk - optional white, primer & varnish

Automatable | Upgradable speed & colors

## Key benefits

- > Versatile printer: tackles nearly all sign & display jobs, as well as packaging
- > Heavy-duty build for 24/7 printing with impressive productivity
- > Award-winning image quality with excellent solid colors and a neutral gray balance
- > Varnish for extra brilliance and impact – HDR screening for an extended color gamut
- > Several 'MAX' automation options to keep up with 1- and 2-pass modes and up your production efficiency when printing long runs or multiple boards
  - Rigids: robots, feeder and/or stacker, automatic board feeder
  - Flexible materials: robots, master roll-to-roll, flex roll-to-roll, light roll-to-roll
- > Great autonomy for your peace of mind

## Perfect for

Cardboard, brown boxes, as well as a wide variety of sign & display graphics. Luxury embellishments.

## Tauro H3300 models

Tauro H3300 S	Tauro H3300 HS	Tauro H3300 UHS
<ul style="list-style-type: none"> <li>&gt; Up to 450 m<sup>2</sup>/h – 4844 ft<sup>2</sup>/h</li> <li>&gt; 4 rows of print heads</li> <li>&gt; 6 colors</li> <li>&gt; Field upgradable to a 6 row CMYKck configuration</li> <li>&gt; Available options: white, primer</li> </ul>	<ul style="list-style-type: none"> <li>&gt; Up to 680 m<sup>2</sup>/h – 7319 ft<sup>2</sup>/h</li> <li>&gt; 6 rows of print heads</li> <li>&gt; 4 or 6 colors               <ul style="list-style-type: none"> <li>• 2x CMYK: focus on productivity</li> <li>• CMYKck: enhanced image quality</li> <li>• CCMYKck: superior image quality thanks to extra redundancy in dark colors</li> </ul> </li> <li>&gt; Available options: white, primer, varnish</li> </ul>	<ul style="list-style-type: none"> <li>&gt; Up to 905 m<sup>2</sup>/h – 9741 ft<sup>2</sup>/h</li> <li>&gt; 8 rows of print heads</li> <li>&gt; 4, 6 or 7 colors               <ul style="list-style-type: none"> <li>• 2 x CMYK: focus on productivity</li> <li>• CCMYKck: superior image quality thanks to extra redundancy in dark colors</li> <li>• CMYKcmk: enhanced image quality with optimal light &amp; mid tone colors</li> </ul> </li> <li>&gt; Extended vacuum for cardboard printing</li> <li>&gt; Available options: white, primer, varnish</li> </ul>





# Jeti Tauro H2500 LED

Hybrid → → →

Up to 390 m<sup>2</sup>/h - 4198 ft<sup>2</sup>/h | Up to 254 cm - 100 in

CMYKcm or CMYKck + white & primer

## Key benefits

- > Manual or continuous feeding of rigid and flexible media
- > Eco-friendly UV LED print technology saves costs and expands the range of substrates
- > Outstanding print quality in six colors plus white or white and primer
- > Gloss mode for an even larger color gamut and enhanced spot color reproduction without loss of image quality or extra ink usage
- > Master roll-to-roll system for long-run jobs; built-in light roll-to-roll unit for occasional, single-roll printing
- > Roll-to-sheet option for fast throughput and minimal material waste

## Perfect for

Retail POS graphics, corrugated POP displays, corrugated packaging



# Jeti Mira MG2716/2732 LED

Flatbed → →

Up to 248 m<sup>2</sup>/h - 2670 ft<sup>2</sup>/h | Up to 270 x 160/320 cm - 106 x 63/126 in

CMYKcm + white – optional primer or varnish

## Key benefits

- > True flatbed system offering impressive print quality in six colors across a wide variety of materials
- > Print & Prepare mode enables loading while printing
- > Optional roll-to-roll unit to handle flexible media up to 205 cm wide
- > Varnish and 3D Lens Technology printing for additional stopping power
- > Primer for difficult substrates

## Perfect for

A wide variety of sign & display graphics, as well as niche applications such as art reproductions, personalized object printing, lenticular printing



NEW

# Jeti Condor RTR5200

Roll-to-roll →→→→

Up to 672 m<sup>2</sup>/h - 7233 ft<sup>2</sup>/h | Up to 528 cm - 208 in

CMYK – Optional light cyan, light magenta, light black, white & varnish

Automatable | Upgradable colors

## Key benefits

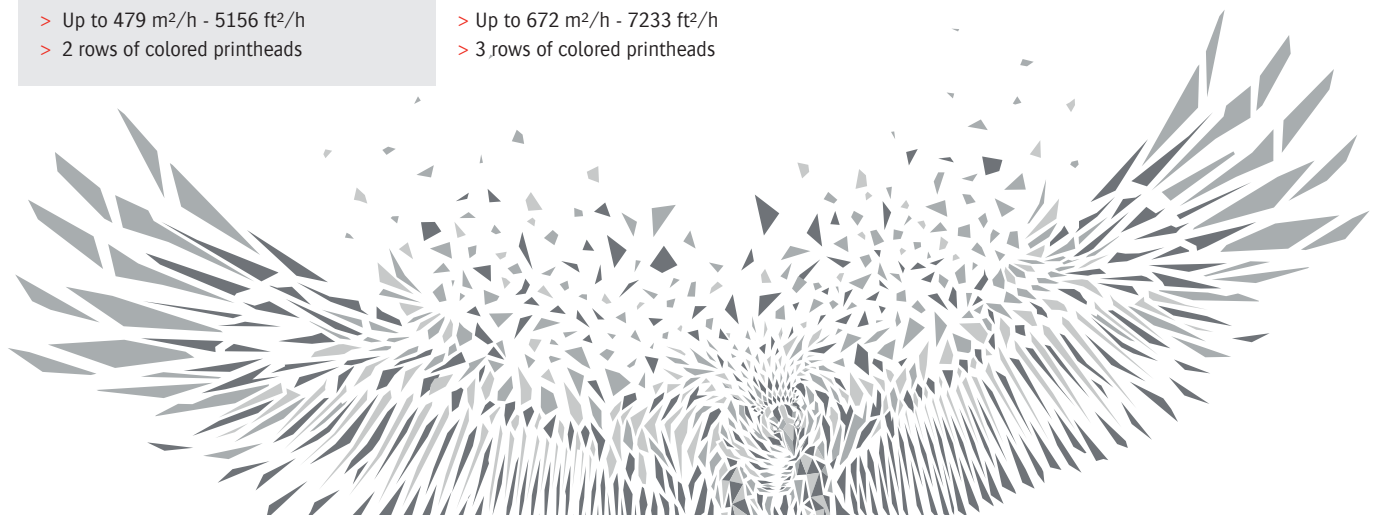
- > The highest image quality at the highest rated speeds – 7 pl, up to 1200 dpi
- > Single roll-to-roll, free-fall, and dual/multi-roll (up to 3 rolls of 63 in)
- > Quick and easy media loading to handle a wide variety of flexible substrates
- > A wide array of design and application possibilities thanks to the varnish printing option and the superb white ink printing performance in single- and multi-layer print modes
- > Continuous printing with minimal supervision – also for backlit printing – using multiple media handling solutions for large and heavy rolls
- > Automated technology for printing mesh
- > Complete print-to-finished graphic workflow saves time, replaces expensive finishing equipment, limits operator intervention, prevents errors and increases yield
- > Low total cost of ownership (TCO) with low power consumption, low ink consumption, and optional tools that save waste, labor, floor space – and ultimately money

## Perfect for

Building wraps, wallcoverings, day & night backlit prints, tradeshow and exhibition graphics, window and floor graphics

## Condor models

Condor RTR5200 S	Condor RTR5200 HS
<ul style="list-style-type: none"> <li>&gt; Up to 479 m<sup>2</sup>/h - 5156 ft<sup>2</sup>/h</li> <li>&gt; 2 rows of colored printheads</li> </ul>	<ul style="list-style-type: none"> <li>&gt; Up to 672 m<sup>2</sup>/h - 7233 ft<sup>2</sup>/h</li> <li>&gt; 3 rows of colored printheads</li> </ul>





NEW

# Jeti Bronco H3300

Hybrid → → →

Up to 248 m<sup>2</sup>/h - 2669 ft<sup>2</sup>/h\* | Up to 330 cm - 130 in

CMYKcm & white

Upgradable speed

\* Under development

## Key benefits

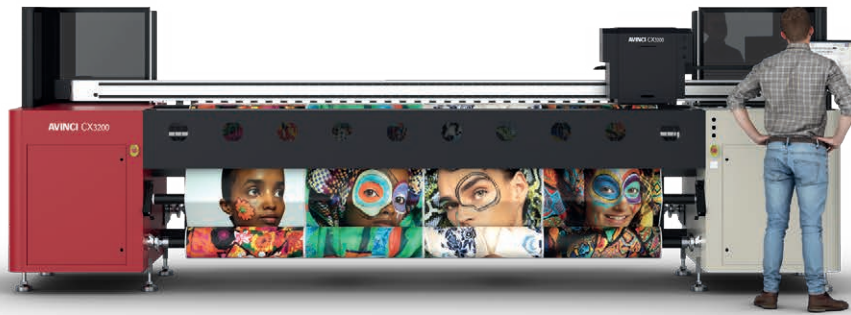
- > Builds on the proven reliability of the hardware and software of the Jeti Tauro hybrid printers
- > Prints a variety of sign & display jobs in six colors plus white
- > Continuous board feeding enhances productivity efficiency even more
- > Independent dual-roll printing allows for the simultaneous printing of differently sized rolls or diverse media
- > Field upgradable from two to four rows for a significant productivity boost

## Perfect for

A wide variety of sign & display graphics







# Avinci CX3200

Roll-to-roll textile printer → →

Up to 250 m<sup>2</sup>/h - 2691 ft<sup>2</sup>/h | Up to 320 cm - 126 in  
CMYK

## Key benefits

- > Dedicated dye-sublimation soft signage printer
- > Direct to textile or using transfer paper for a wide application scope
- > Excellent print quality and fine detail rendering
- > A robust design for reliable printing at all times
- > Single-operator ease of use with efficient media handling and a fast changeover between jobs
- > Inks carrying the OEKO-TEX® ECO PASSPORT that print rich blacks and vibrant colors
- > Off-line calendaring unit for perfect fixation

## Perfect for

Polyester-based fabrics used for banners, displays, flags, wall graphics, POS, interior decoration and sportswear



# Oberon RTR3300

Roll-to-roll → →

Up to 224 m<sup>2</sup>/h - 2411 ft<sup>2</sup>/h | Up to 330 cm - 130 in  
CMYK + white or CMYKcm

## Key benefits

- > Extremely wide media and applications scope – even the most heat-sensitive substrates
- > Liner-free mesh printing
- > Dual-roll printing option for increased flexibility
- > Smooth tonal rendering and razor-sharp texts
- > Outstanding ease of use with free-fall option, safety light curtain and quality inspection light box

## Perfect for

A wide variety of sign & display graphics, including self-adhesive vinyl, cling foil, backlit film, and mesh

# Anapurna series

The Anapurna series consists of hybrid, flatbed and roll-to-roll printers targeted at medium-sized printing companies.

## Hybrid Anapurna range

### Key benefits

- > Versatile printers that tackle a wide range of rigid and roll media for indoor and outdoor applications
- > Pre-white, sandwich white and post-white in one run – handy for elevated printing or for transparent materials used for back-lit applications
- > Borderless printing limits post-finishing requirements
- > Built on an industrial framework tailored for enduring steady workloads
- > Proven technology, based on 20 years of expertise
- > Outstanding ease of use with free-fall option, safety light curtain and quality inspection light box

### Perfect for

A wide variety of sign & display graphics, from exhibition panels and advertising boards to banners and textiles, in addition to heat-sensitive foils, PET, and microflute

ANAPURNA



NEW

## Anapurna Ciervo H3200 LED

Hybrid → →

Up to 209 m<sup>2</sup>/h - 2249 ft<sup>2</sup>/h\* | Up to 320 cm - 126 in

CMYKcm & white

\* Under development

Combine rapid throughput with superior print quality

- > The new hybrid Ciervo boast a wide color gamut and exceptional rendering of dark solid tones on both flexible and rigid materials. Its continuous board feeding capacity enables efficient printing on rigid materials, at up to four boards simultaneously.



# Anapurna H1650i/H2050i/ H2500i LED

Flatbed → | Up to 63/104/115 m<sup>2</sup>/h - 678/1119/1238 ft<sup>2</sup>/h | Up to 165/205/250 cm - 65/81/98 in  
Anapurna H1650i LED: CMYKcm or CMYK + white | Anapurna H2050i LED & 2500i LED: CMYKcm + white



# Anapurna RTR3200i LED

Roll-to-roll → | Up to 127 m<sup>2</sup>/h - 1367 ft<sup>2</sup>/h | Up to 320 cm - 126 in | CMYK + white, or CMYKcm

## Key benefits

- > Versatile media handling for a wide range of indoor and outdoor roll materials
- > Optional dual-roll printing to double productivity on smaller media
- > UV LED inks provide fast drying and energy efficiency
- > White printing improves opacity, color contrast, and readability
- > Multi-layer printing for lively images and great backlit prints
- > Mesh printing option

## Perfect for

Diverse flexible materials, including fabric, canvas, vinyl, film, paper, polyester, and eco-friendly PE



# Anapurna FB2540i LED

Flatbed → | Up to 96 m<sup>2</sup>/h - 1033 ft<sup>2</sup>/h | Up to 254 cm - 100 in | CMYKcm + white

## Key benefits

- > True flatbed with moving gantry delivers accurate dot placement and high-quality prints
- > Advanced vacuum system for reliable media positioning and handling
- > Precise double-sided printing
- > Borderless printing eliminates extra finishing steps, saving time and money
- > Multiple color and white ink layers in one pass
- > UV LED technology for energy efficiency, faster curing, and a broad application scope

## Perfect for

Nearly any rigid or sheet material – including corrugated boards, plastics, plexiglass etc. – for both indoor and outdoor applications such as banners, signage, displays, or custom items up to 4.5 cm thick

# > What our customers say

> “We’ve significantly reduced our costs and improved our overall production efficiency with Agfa’s Asanti workflow software”  
> **Grupo Arte Visão, Brazil**

> “We at Delta are excited to get our hands on the first SpeedSet Orca in the world in our plant. We will be pushing it to the limit and expect great things from the press”  
> **The Delta Group, UK**

> “We’ve run everything from corrugate displays to SBS paperboard projects. We’ve also noticed quite an uptick in business for brands and retailers. The Onset Grizzly has increased our ability to turn these projects around much quicker and more cost-effectively.”  
> **Flower City Group, USA**

> “When we put the predecessor of the Tauro H3300 UHS LED into service, it greatly strengthened our market position. With the new machine, we experience a similar effect. Its performance is impressive, and we can process larger boards now. Also, the hybrid design makes it very flexible.”  
> **Creaplot, Switzerland**

> “Agfa is the only company that can provide an integrated solution. Having one point of contact avoids discussions and gives us a competitive advantage”  
> **Wowprint, France**

> “We highly value the Avinci because it is an extremely reliable engine in terms of stability and color reproduction. It enables us to print on fabrics as well as on paper, which means we can print on many kinds of textile.”  
> **Agence de Fab, France**

> “We needed a printer that could handle larger materials and improve our print speeds. We went with the new Ciervo because it was the fastest, used the least ink, and we were already familiar with Agfa. We were also impressed by the quality, perfect for some of our detailed POS work.”  
> **Freestyle Designs, UK**

> “The Oberon has a wide media reach. If you cannot print media on the Oberon, you cannot print them on anything.”  
> **TVE, The Netherlands**

> “We just didn’t get the same service vibe from other suppliers. It’s how quickly and professionally Agfa has always resolved issue that has cemented our partnership over the years.”  
> **Northern Flags, UK**

# Asanti

Asanti is an all-in-one, automated production hub featuring Agfa's award-winning color management technology, powered by the latest version of Adobe PDF Print Engine (APPE).

## Key benefits

- > A single tool with an intuitive user interface to manage all your print data and devices
- > Automatic pre-flighting, PDF checking and managing of your entire printing process
- > Built-in color management for consistent color quality and reproduction with minimal effort
- > Reliable, predictable and high-quality output
- > Increased productivity due to minimized manual interventions and less idle time
- > Less media waste thanks to dedicated options such as nesting and tiling, as well as better planning
- > Integration with Asanti StoreFront web-to-print, PrintSphere data management and PrintTune standardization software
- > Integration with MIS and ERP systems enables you to finetune quotes
- > Smart browser-based **Production Dashboard** that reports on the status of print jobs, printers, ink levels etc.



### Core Advanced Expert

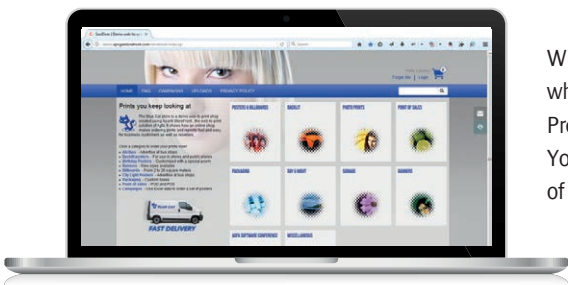
- > Asanti comes in three different subscription models (Core/Advanced/Expert), with a predictable flat fee, immediate access to all software updates, and guaranteed smooth operations at any time.

## G7 certified

The latest version of our Asanti software recently obtained the G7® certificate from the Idealliance industry association for print and packaging. G7® is a set of specifications for achieving visual similarity across all print processes or substrates.

## Asanti StoreFront

Asanti StoreFront is web-to-print software solution that streamlines order fulfillment and reduces costs. No more repetitive quote creation or retrieving order files!



With StoreFront, your customers can place orders in an easy-to-use online store whenever they want. Print jobs are automatically downloaded and queued for production. Prepress operators can still step & repeat POP orders, tile banners and add marks, if needed. You don't need HTML know-how or scripting skills to set up stores. And we'll take care of system maintenance and security while you focus on your core business.

## PrintSphere

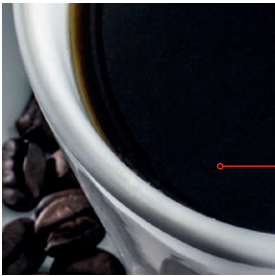
PrintSphere is our cloud-based service that offers a standardized way for production automation, easy file sharing and safe data storage.

## PrintTune

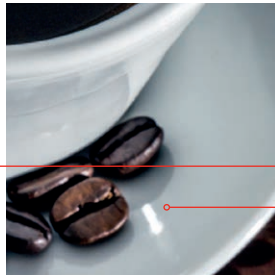
PrintTune guarantees color consistency and ensures that printing jobs meet in-house standards or commonly known color spaces from Fogra or IDEAlliance. Through objective measuring and powerful analytics, it helps lower media waste, increase efficiency, and improve communication between all stakeholders.

# > Best print quality

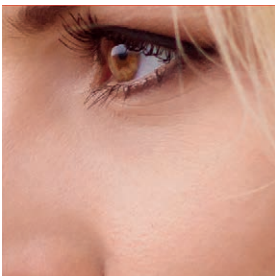
## Excellent rendering



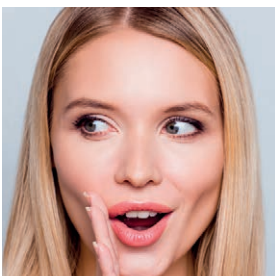
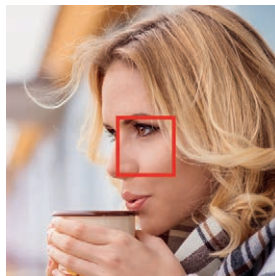
Details in shadows



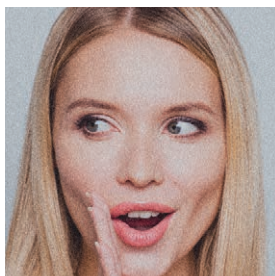
Details in highlights



Smooth skin tone rendering



Low noise rendition

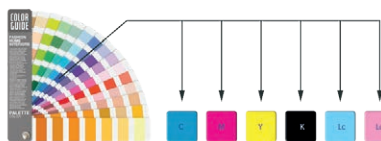


Smooth ramp-ups over tonal range



## True colors

Large color gamut and accurate spot color mapping



Artefact-free solid color reproduction



Neutral gray balance



## Lowest ink consumption

Agfa's in-house developed inks enable you to print on a wide range of flexible and rigid materials for indoor and outdoor applications. They boast a wide color gamut and high color vibrancy, resulting in lively yet natural prints.

Thanks to Agfa's patented 'Thin Ink Layer' technology ink consumption per square foot is the lowest on the market. That means you can create eye-catching prints while saving on your budget.

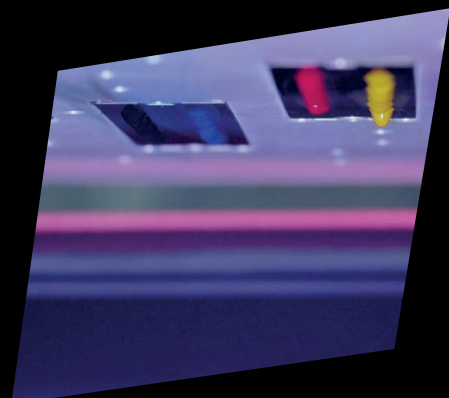


Agfa inks obtained multiple certificates – including GREENGUARD Gold – and comply with a range of industry norms pertaining to product safety as well as chemical emissions and air quality.

## Tuned Agfa waveform

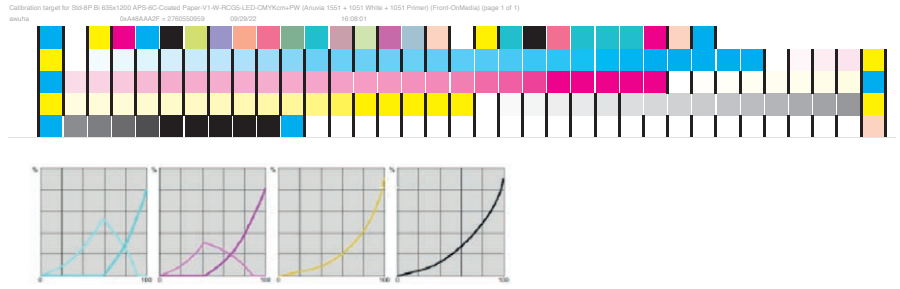
Optimal drop formation:

- > minimal tail length
- > outstanding dot positioning
- > no mist/ink satellites



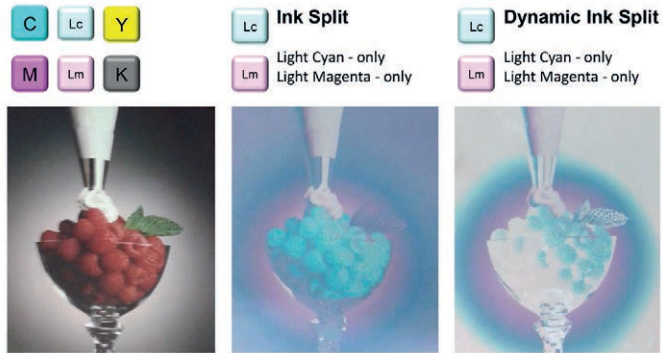
## Ink/Media profiles

Agfa's Calibrated Print Mode (CPM) enhances efficiency and productivity by bundling all relevant settings for a particular substrate, and making them available to operators with a single click in the Asanti workflow.



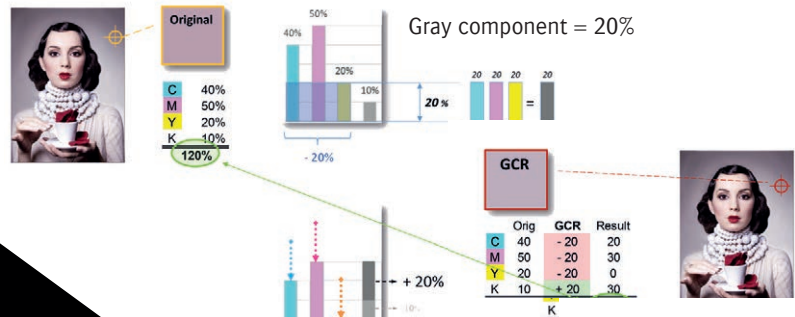
## Dynamic Ink Split (DIS)

Agfa's patented technology to make optimal usage of light colors (Lc-Lm-Lk) and reduce ink consumption



## Asanti InkSave GCR/UCR

Our ink saving software results in reduced ink usage without loss of quality.



GCR subtracts gray component (20% CMY) from colors and adds to black

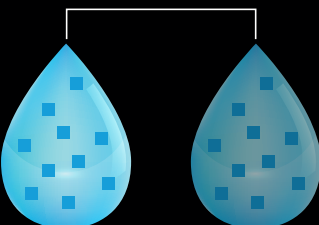
## Thin Ink Layer technology

The highest print quality at the lowest ink consumption

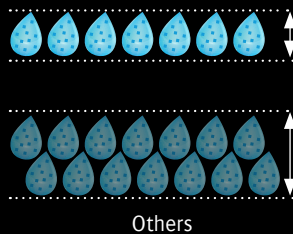
Thanks to:

- > Highly efficient distribution of the pigments, resulting in exceptional color strength
- > Smart use of ink limitations, GCR etc. in the Asanti software
- > Limited, easy and fast printer maintenance

**AGFA**  Others



**AGFA**  Others





NEW

# SpeedSet Orca

Sheetfed-water based inkjet printer → → → → → → → →

Up to 11,000 B1 sheets/hour | Up to 1060 mm x 750 mm (41.7 in x 29.5 in)

CMYK (up to 7 colors optional) + primer + varnish



## Key benefits

- > **Productivity:** The Orca prints up to 11,000 B1 sheets per hour, making it one of the fastest digital packaging presses available
- > **Cost-effectiveness:** Compared to offset printing, the Orca reduces costs thanks to shorter setup times, less material waste, efficient variable data printing, and no need for printing plates
- > **Unbeatable speed to market:** Digital printing allows for quick startup and seamless job changeover, enabling rapid on-demand printing for diverse packaging designs
- > **Offset-like Quality:** With 1200 dpi resolution and a wide color gamut, the Orca delivers crisp text and industry-standard color quality
- > **Sustainability:** The Orca uses eco-friendly water-based inks, primer, and varnish, producing recyclable prints that meet food-safety standards. As a digital press, it starts print jobs with minimal waste of consumables or media.
- > **Low ink consumption:** Efficient primer application and selective digital printing of primer and varnish minimize ink use and enhance image quality
- > **Differentiation:** Fully digital printing enables customization and personalization, supporting product differentiation

## Perfect for

A broad range of substrates, ranging from folding carton and micro-flute to various paper types, making it optimally suited for retail or shelf-ready food and beverage packaging. With substrate thickness ranging from 0.2 mm paper to 2 mm microflute, it caters to diverse application needs.

> Get a demo or print sample pack!

